



## PROJECT DESIGN SERIES

# Drafting Standards for Kitchens & Bathrooms

### About the course

This course is designed for:

- > interior designers
- > kitchen and bathroom designers
- > sales consultants and product specifiers

This course will provide general awareness of the drafting standards and application of AS1100 and industry standards specific to kitchens, bathrooms and interiors that feature built in cabinetry.

### Course duration and delivery

**Duration:** Self paced – 4 weeks is recommended, allowing 3-4 hours per week.

(Once you have commenced you have 2 months to complete the course.)

**Delivery:** Online

### Resources

**Learner Resources:** Upon course commencement you will receive access to electronic learner resources that have been developed by leading design professionals to provide a stimulating learning process.

**Other Resources** You will need to have access to a computer with Microsoft Office or equivalent and a high speed internet connection. General stationery items including pens, pencils, notebook, ruler and tape measure are recommended.

### Trainers

All trainers are experienced and qualified designers with broad skills and knowledge in interior design and the home improvement sector.

### Projects and feedback

At the conclusion of the course, you complete a project and submit to your trainer for review. Your trainer will provide you with feedback to give guidance on aspects that are well executed and/or opportunities for development.

### Support and advice

Our support team offer a range of options for assistance. You can make contact during business hours via phone, or email to log a request for assistance and guidance.

### Dates

Registrations close on the first Monday of the month with courses starting on Tuesday

### Certificate of participation

All participants who complete and submit the project will receive a certificate of participation.

### Cost

**\$220 (Inc GST)**

### Need more information

If you require any further information regarding this course, please contact us and we would be happy to assist.

**Phone: 1300 850 725**

**Email: [info@designertraining.edu.au](mailto:info@designertraining.edu.au)**

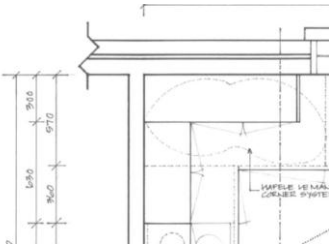
**CLICK HERE TO REGISTER**



## Course Outline

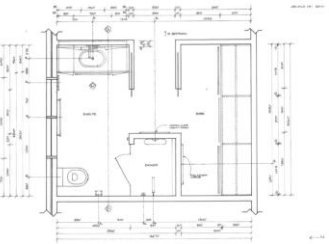
### Module 1: Introduction

- > Types of drawings
- > Lines types
- > Symbols
- > General guidelines



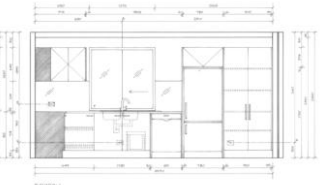
### Module 2: Floor Plan

- > Walls, windows and openings
- > Cabinets, benchtops, fixtures and fittings
- > Dimensioning
- > Annotations and symbols



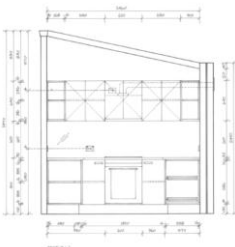
### Module 3: Elevation

- > Walls, windows and openings
- > Cabinets, benchtops, splashbacks, fixtures and fittings
- > Dimensioning
- > Annotations and symbols



### Module 4: Section

- > Walls, windows and openings
- > Cabinets, benchtops and splashbacks
- > Dimensioning
- > Annotations and symbols



### Module 5: Mechanical Plan

- > Walls, windows and openings
- > Services including plumbing, electrical and gas
- > Dimensioning
- > Annotations and symbols

